

Svanaya Systems Advanced Industrial Chains & Parts

Company Overview

Svanaya Systems is a trusted supplier of high-quality industrial power transmission and motion components, specializing in bearings, couplings, chains, belts, and a wide range of related mechanical components. We serve diverse industries including manufacturing, agriculture, mining, construction, and logistics, helping keep critical operations running efficiently. Our extensive product portfolio includes precision bearings, durable roller and conveyor chains, high-performance belts, and flexible couplings, along with complementary components such as sprockets, pulleys, bushings, shafts, seals, lubricants, and maintenance products. Every product we supply is sourced from reputable manufacturers to ensure reliability, durability, and consistent performance in demanding industrial environments. At our core, we are committed to delivering quality products, technical expertise, and dependable service. We don't just supply parts — we build long-term partnerships that help our customers improve efficiency, reduce costs, and achieve operational excellence.

Core Strengths

- Custom chain solutions
- High durability materials
- Precision engineering

Product Catalogue

Svanaya Systems supplies a wide range of industrial chains designed for high-load and continuous operation. Our products include Bucket Elevator chain, scraper reclaimer chain, forged link chains, Pan conveyor chains, heavy drag chains, cast link drag chains etc. and its accessories used across industries such as power transmission, oil, sugar, cement, mining, and bulk material handling.

Our industrial chains are engineered for durability, wear resistance, and long service life, ensuring reduced downtime and improved operational efficiency.

Key Features

- High tensile strength
- Heat and wear resistance
- Corrosion-resistant materials
- Custom-engineered solutions
- Long operational life

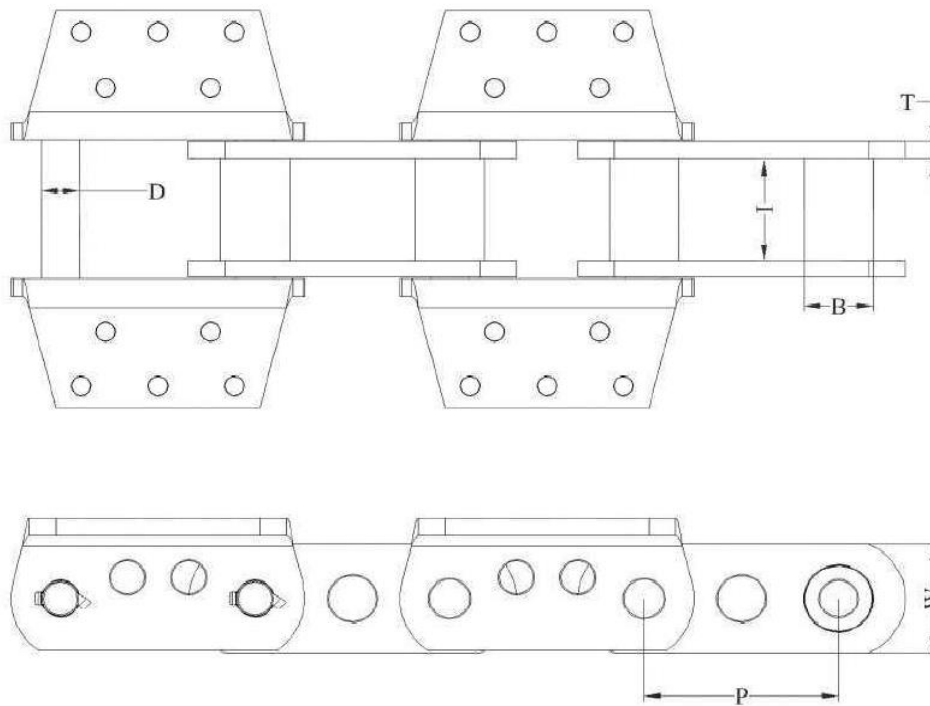
Contact

Svanaya Systems

Website: www.svanayasystems.com

Email: sales@svanayasystems.com

Bucket Elevator Chain

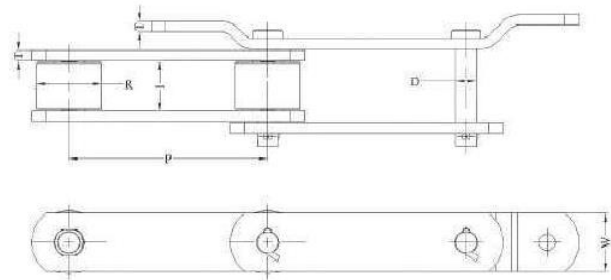
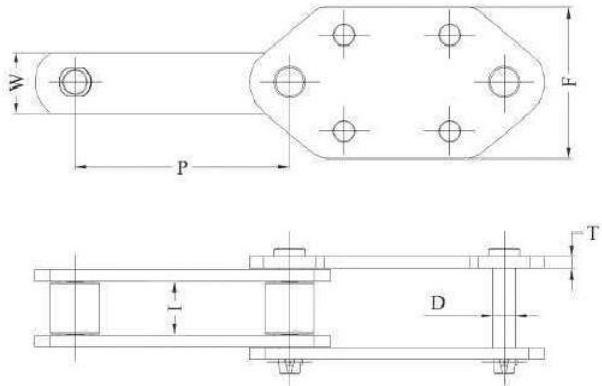


Chain No.	P	B	D	I	T	W	Tensile Strength (Tons)
RUN 857	152.4	44.5	25.4	76.2	12.7	83.6	55
RUN 859	152.4	60.5	31.8	95.3	15.7	102	80
RUN 956	152.4	44.5	25.4	76.2	12.7	76.2	50
RUN 958	152.4	50.8	28.6	76.2	14.2	83.6	65
RUN 864	177.8	60.5	31.8	95.3	15.7	102	80
RUN 984	177.8	63.5	34.9	95.3	15.7	102	95
RUN 1084	177.8	72.4	41.1	113	19	114	130

All dimensions are in mm

Alternative sizes available on enquiry

Elevator Chains Double strands

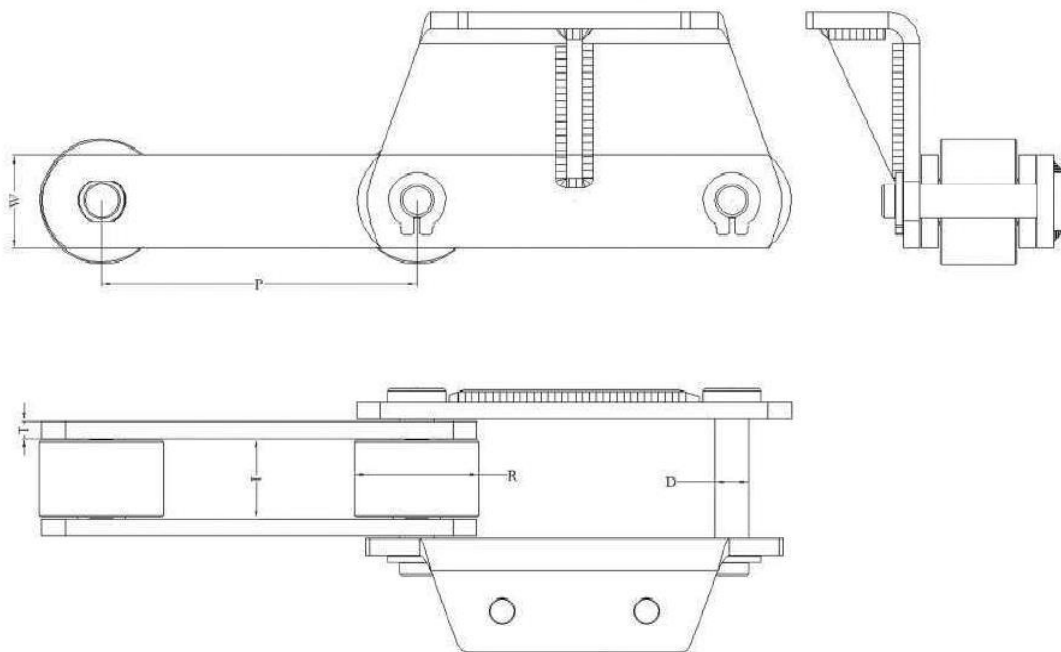


Chain No.	P	D	I	T	R	W	Tensile Strength (Tons)
RUN G118	305	22.4	49.3	12.7	44.5	50.8	40
RUN G5	229	25.4	66.8	12.7	78.2	63.5	50
RUN G5	229	31.8	77.7	16	108	88.9	80
RUN G6	229	38.1	82.55	17.75	114.3	101.6	115

All dimensions are in mm

Alternative sizes available on enquiry

Scraper Reclaimer Chain

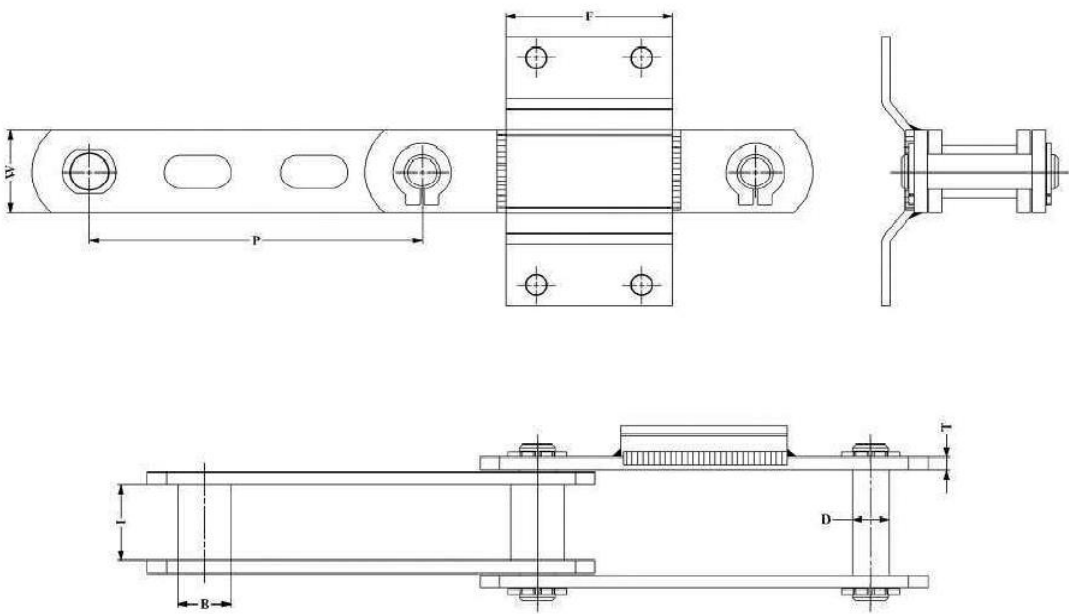


Chain No.	P	D	I	T	R	W	Tensile Strength (Tons)
RUN 250	250	42	58	15	130	100	125
RUN 315	315	36	60	15	130	100	100
RUN 400	400	36	70	15	130	100	100

All dimensions are in mm

Alternative sizes available on enquiry

Deep Bucket Pan Conveyor Chain

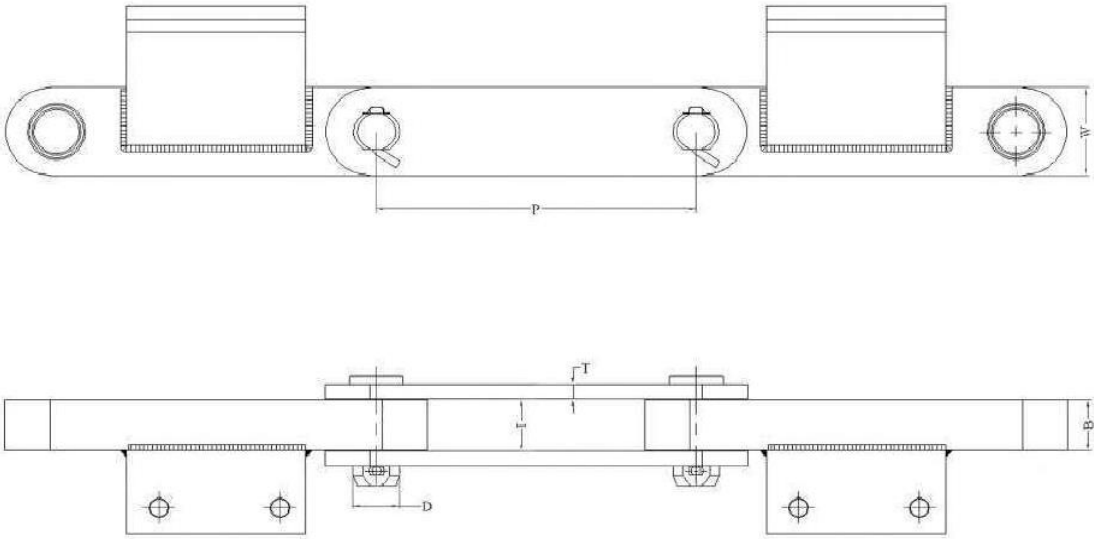
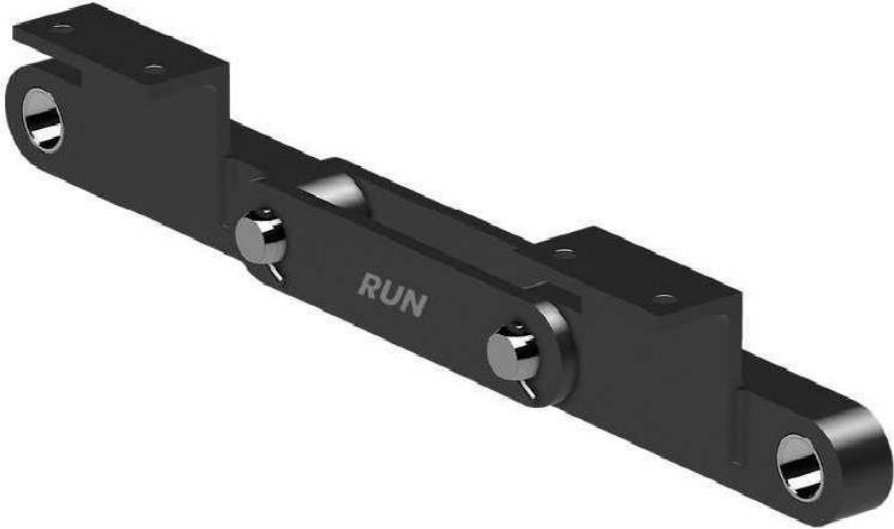


Chain No.	P	B	D	I	T	W	Tensile Strength (Tons)
RUN 200	200	32	22	45	8	50	20
RUN 250 L	250	45	32	65	10	70	35
RUN 250 H	250	50	35	67	12	80	55

All dimensions are in mm

Alternative sizes available on enquiry

Scraper Reclaimer Chain Block Bag Type

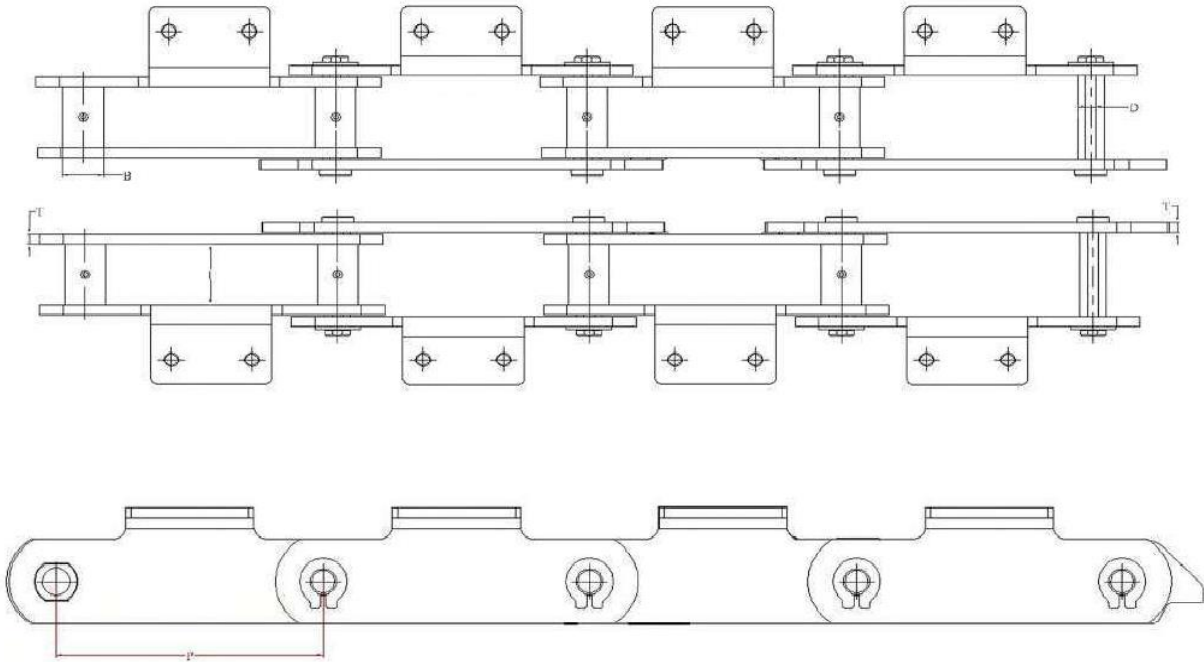
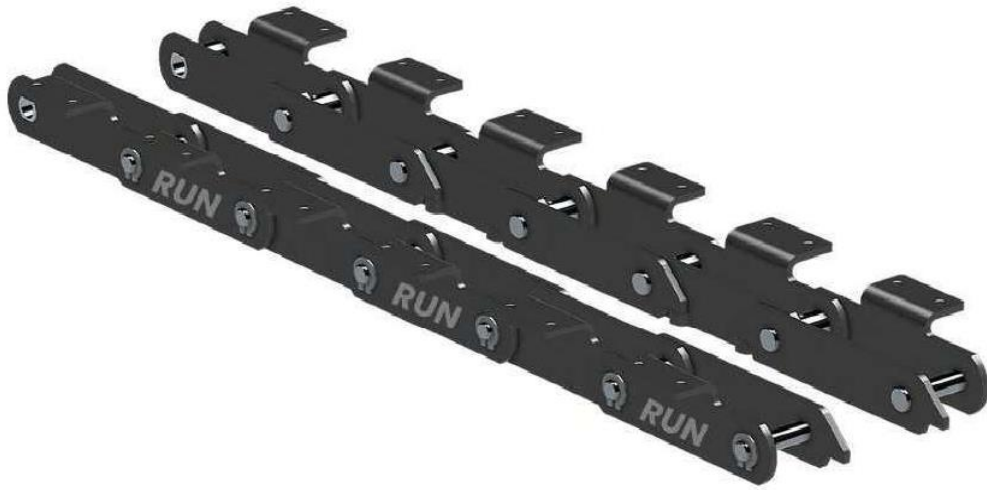


Chain No.	P	B	D	I	T	W	Tensile Strength (Tons)
RUN 250	250	40	36	41	12	70	50
RUN 315	315	50	42	51	15	80	70

All dimensions are in mm

Alternative sizes available on enquiry

Pan Conveyor Chain

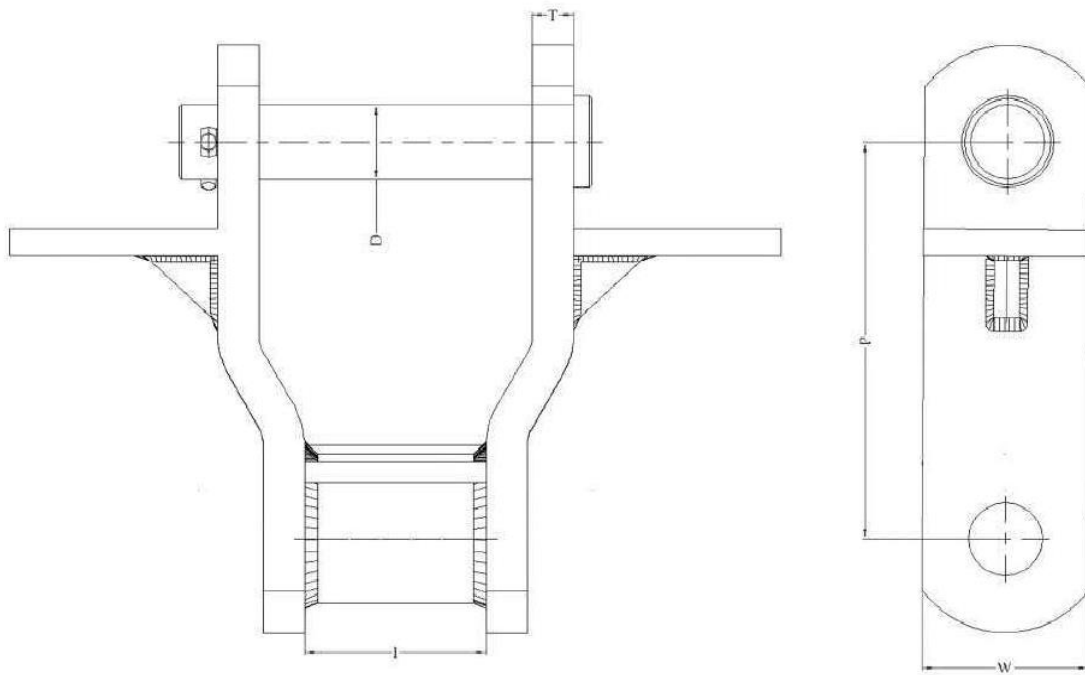


Chain No.	P	B	D	l	T	W	Tensile Strength (Tons)
RUN 45X6	200	26	18	35	6	45	17
RUN 60X8	250	32	20	40	8	60	30
RUN 65X10	250	36	25	45	10	65	45
RUN 70X10	250	40	26	45	10	70	50
RUN 70X10	250	42	30	50	10	70	45
RUN 80X10	250	44	30	60	10	80	60
RUN 80X12	250	44	30	60	12	80	70
RUN 90X12	250	54	60	12	12	90	70
RUN 90X12	315	44	65	12	12	90	70

All dimensions are in mm

Alternative sizes available on enquiry

Heavy Duty Welded Steel Drag Chain

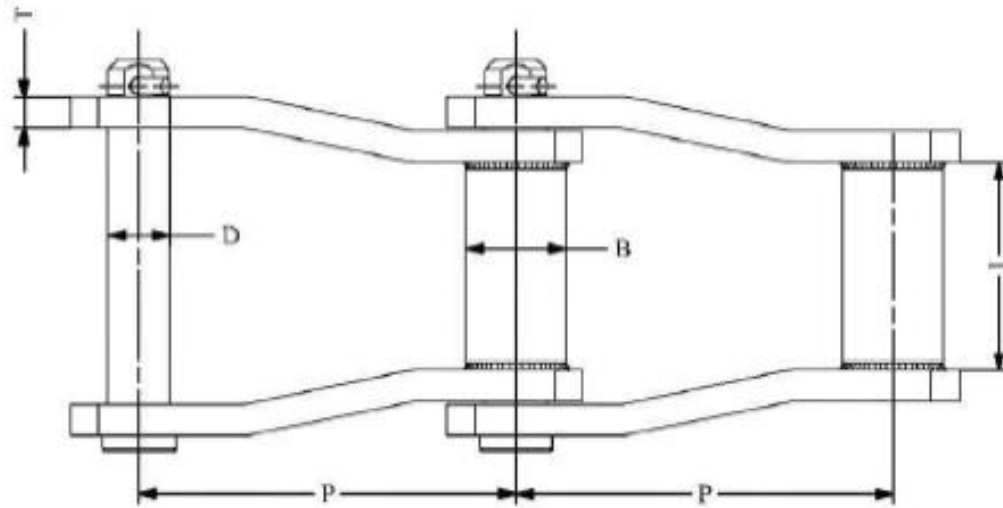


Chain No.	P	A	D	I	T	W	Tensile Strength (Tons)
RUNH 154	154	203-356	28.7	69.9	16	63.5	65
RUNH 229	229	254-660	31.8	92.2	19.1	63.5	80
RUNH 229	229	254-762	31.8	92.2	28.7	63.5	80

All dimensions are in mm

Alternative sizes available on enquiry

Welded Steel Chain

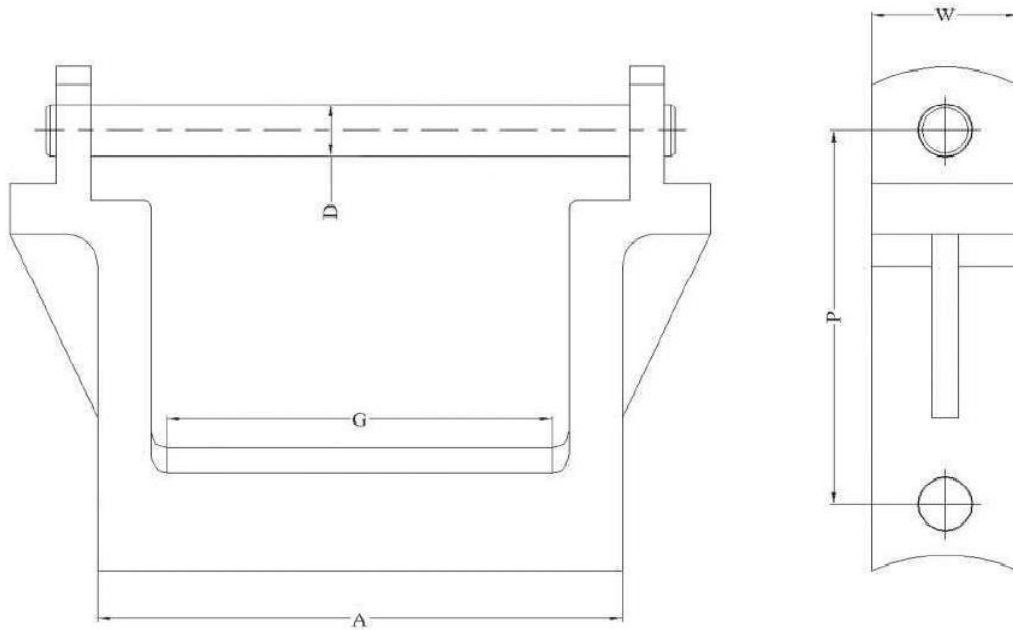


Chain No.	P	B	D	T	W	l	Tensile Strength (Tons)
RUN 080	80	31	14.2	6	34	32	13
RUN 0101	101.6	36.5	19	10	40	41.5	27
RUN 0152	152.4	36.5	19	10	40	41.5	27
RUN 0154	154	41.3	25.4	12	50	76	38

All dimensions are in mm

Alternative sizes available on enquiry

Cast Link Drag Chain

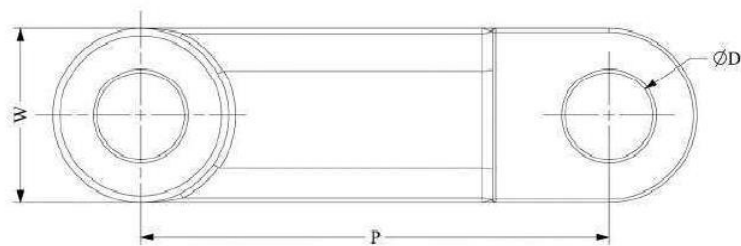
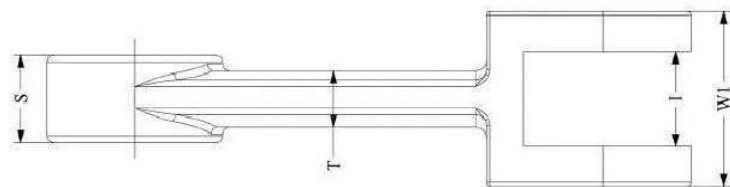


Chain No.	P	A	D	G	W	Tensile Strength (Tons)
RUN 351	228.6	315.976	31.75	241.3	88.9	18
RUN 361	228.6	214.376	31.75	146.05	63.5	17
RUN 371	228.6	174.498	28.702	107.95	63.5	15
RUN 381	228.6	325.374	22.352	257.302	54.102	13
RUN 391	228.6	223.774	22.352	171.45	54.102	13

All dimensions are in mm

Alternative sizes available on enquiry

Forged Link Standard Series

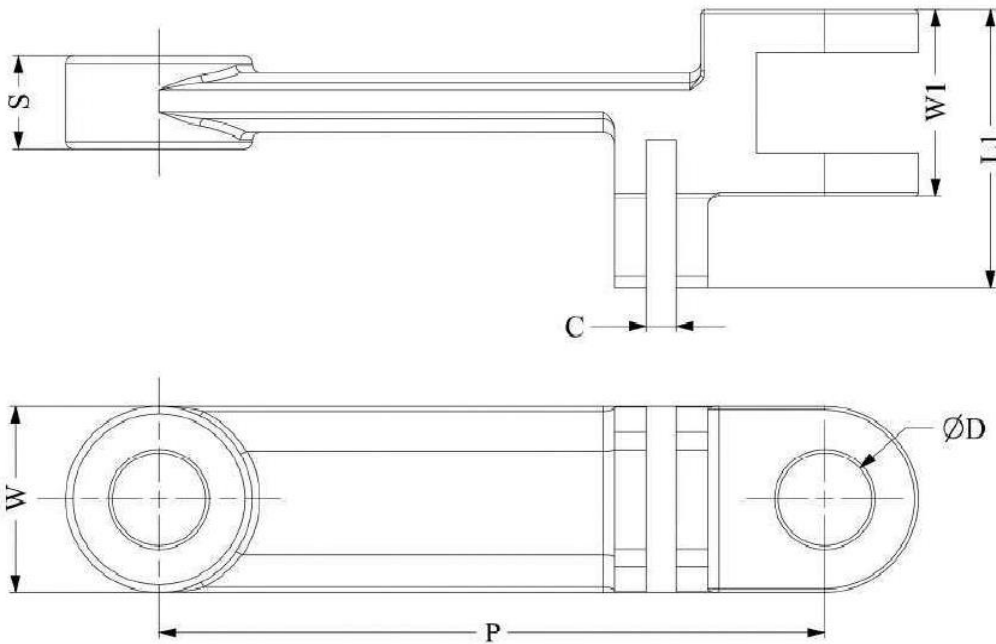


Chain No.	P	D	S	T	S	W	W1	Tensile Strength (Tons)
RUN 101	101.6	14	8	6	8	36	24	11
RUN 102	101.6	14	13	9	13	36	30	15
RUN 103	125	16	13	10	13	36	30	18
RUN 104	142	18	13	9	13	40	30	20
RUN 105	142	25	19	11	19	50	42	35
RUN 106	142	25	25	16	25	50	54	45
RUN 107	142	25	28	15	28	50	62	50
RUN 108	160	22	22	15	22	46	46	35
RUN 109	160	25	23	13	23	53	50	45
RUN 110	200	25	25	18	25	50	60	50
RUN 111	200	30	30	20	30	60	66	65
RUN 112	216	35	26	20	26	72	64	73
RUN 113	220	35	26	20	26	72	64	73
RUN 114	220	32	28	25	28	75	58	80
RUN 115	220	35	31	21	31	75	71	95
RUN 116	250	32	32	18	32	75	70	81
RUN 117	260	32	31	20	31	75	65	81
RUN 118	260	32	31	20	31	75	70	81
RUN 119	260	32	35	20	35	75	78	81

All dimensions are in mm

Alternative sizes available on enquiry

Forged Link Double Series

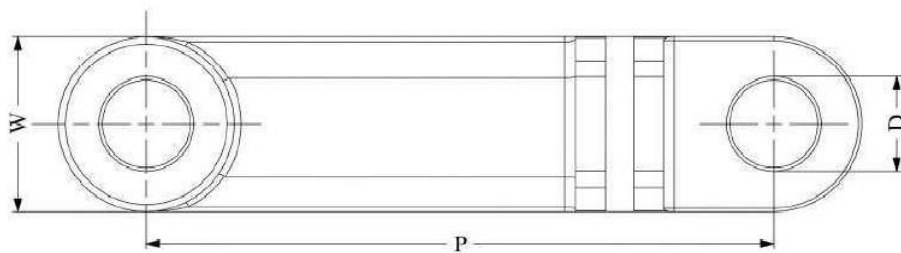
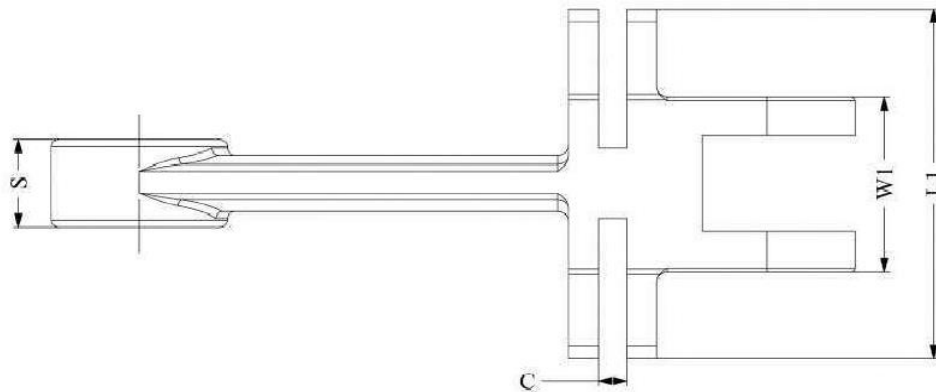


Chain No.	P	C	D	L1	S	W	W1	Tensile Strength (Tons)
RUN 511	142	13	25	70	19	50	42	35
RUN 512	142	13	25	87	28	50	62	50
RUN 513	160	13	25	82	23	53	50	50
RUN 514	175	16	30	95	30	60	72	70
RUN 515	200	12	25	81	25	50	60	56
RUN 516	200	13	30	95	30	60	70	70
RUN 517	250	12	25	81	25	50	60	56
RUN 518	250	13	30	95	30	60	70	70
RUN 519	250	21	35	140	45	70	100	97

All dimensions are in mm

Alternative sizes available on enquiry

Forged Link Triple Series

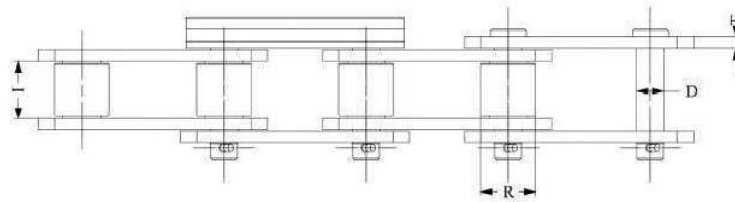
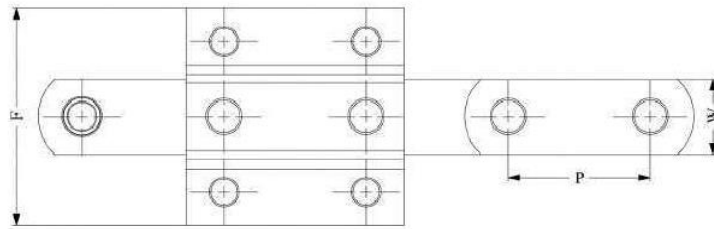


Chain No.	P	C	D	L1	S	W	W1	Tensile Strength (Tons)
RUN 620	142	13	25	92	19	50	42	35
RUN 631	142	13	25	112.3	28	50	62	50

All dimensions are in mm

Alternative sizes available on enquiry

Bucket Elevator Chain T-Series

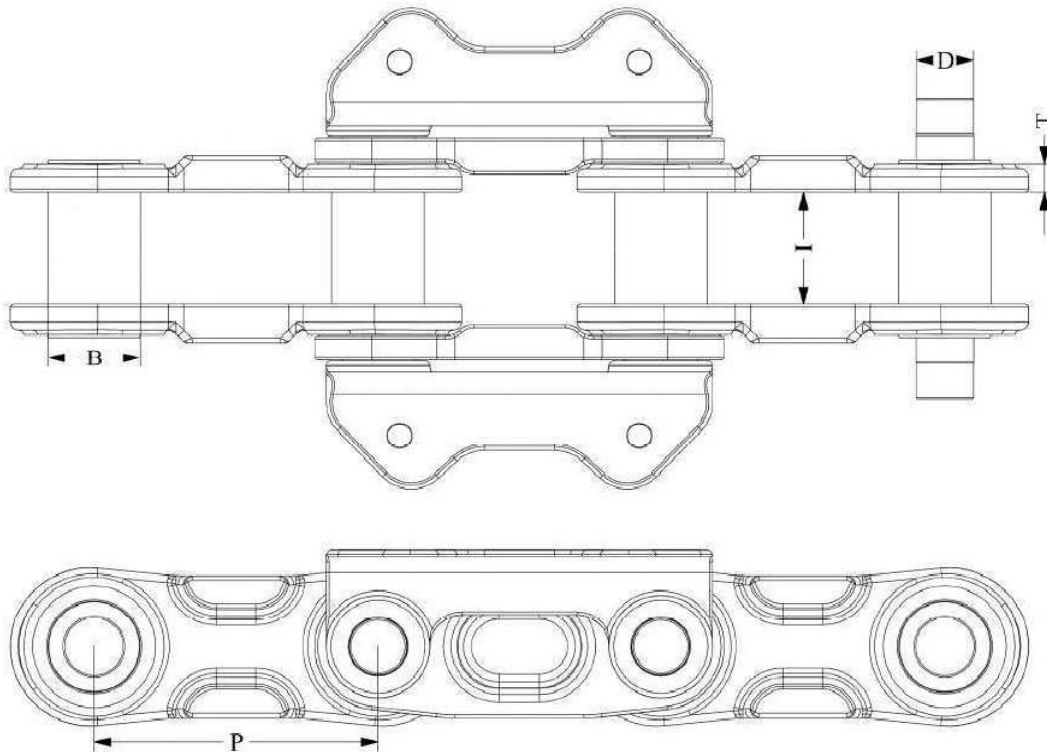


Chain No.	P	D	I	R	T	W	Tensile Strength (Tons)
R7516	75	14.4	30	29	6	40	16
R76220	76.2	15.8	36.5	35	8	45	20
R100471	100	24	57.2	50.8	10	76.2	0
R100472	100	24	57.2	50.8	10	63.5	0
R10030	100	19.1	51.4	40.1	10	50.8	0
R12530	125	19.1	51.4	40.1	10	50.8	0
R12546	125	24	57.2	50.8	10	63.5	0
R12584	125	32	68	63.5	12	90	0
R150171	150	14.5	29.5	29	6	40	0
R150172	150	14.5	29.8	26.5	6	40	0
R16037	160	21.2	44.5	42.4	8	65	0
R16053	160	25.4	46	49.25	10	75	0
R175120	175	42	88	85	15	110	0
R20047	200	24	57.2	50.8	10	76.2	0
R20030	200	19.1	51.4	40.1	10	50.8	0

All dimensions are in mm

Alternative sizes available on enquiry

Heavy Duty Bucket Elevator

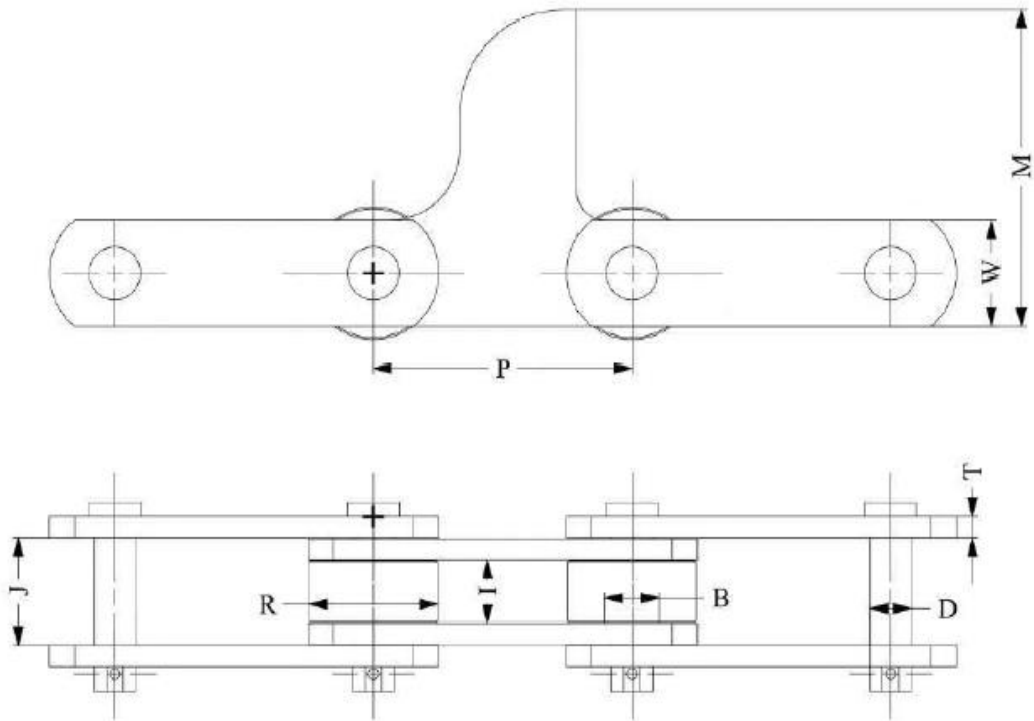


Chain No.	P	B	D	I	T	Tensile Strength (Tons)
RUN 1778 110	177.8	58	40	70	18.5	110
RUN 180 200	180	80	50	106	20	200
RUN 180 150	180	66	40	100	22	150
RUN 200 80	180	55	38	85	15	80

All dimensions are in mm

Alternative sizes available on enquiry

Feeder Table Chain

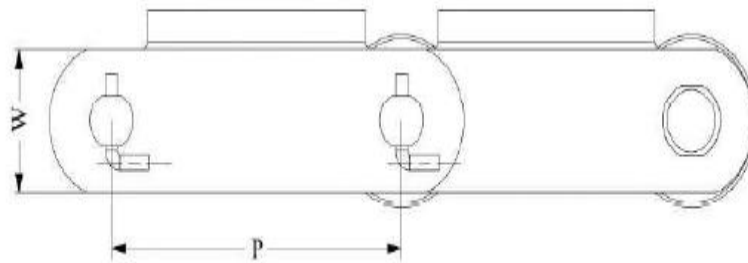
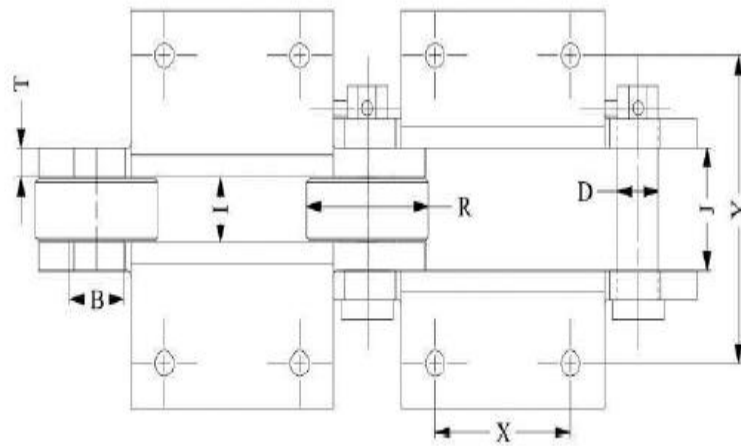


Chain No.	P	B	D	I	J	R	M	T	W	Tensile Strength (Tons)
RUN 101	150	27	20	30	49	60	125	8	50	20
RUN 102	150	30	23	35	58	75	145	10	65	30
RUN 103	150	33	25	35	62	75	150	12	65	40
RUN 104	150	35	28	35	66	75	150	14	65	60

All dimensions are in mm

Alternative sizes available on enquiry

Cane Carrier Chain

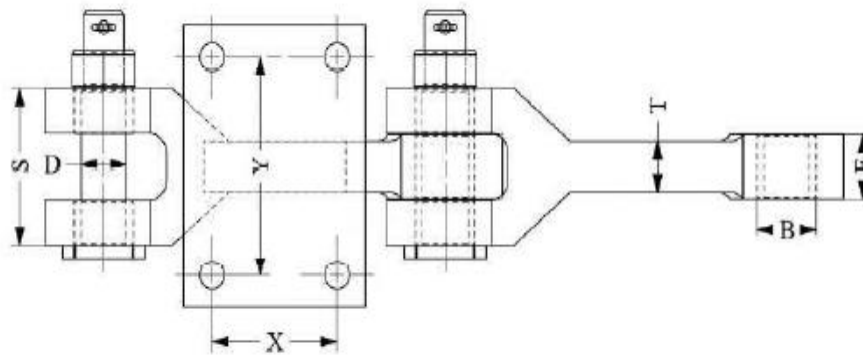
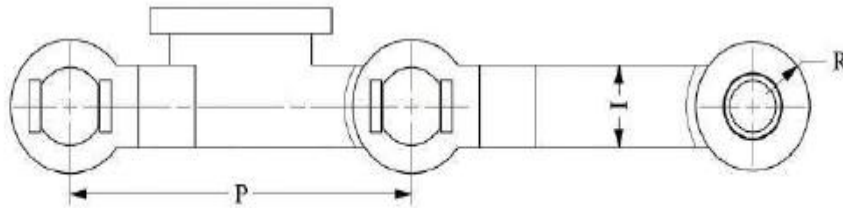


Chain No.	P	B	D	I	R	T	W	X	Y	Tensile Strength (Tons)
RUN 201	150	27	20	32	60	8	50	60	120	20
RUN 202	150	30	23	37	75	10	65	64	126	30
RUN 203	150	33	25	37	75	12	65	60	130	40
RUN 204	150	33	25	37	75	12	65	75	150	40
RUN 205	150	35	28	37	75	12	65	60	130	50
RUN 206	150	35	28	37	75	12	65	75	150	50
RUN 207	150	36	28	37	75	14	65	75	150	60
RUN 208	150	38	30	37	90	16	75	75	150	80
RUN 209	200	36	28	37	90	12	75	75	150	60
RUN 210	200	38	30	37	90	14	75	80	170	75
RUN 211	200	40	32	37	90	16	75	80	170	80
RUN 212	200	40	32	37	90	16	75	100	170	100

All dimensions are in mm

Alternative sizes available on enquiry

Forged Rake Elevator Chain

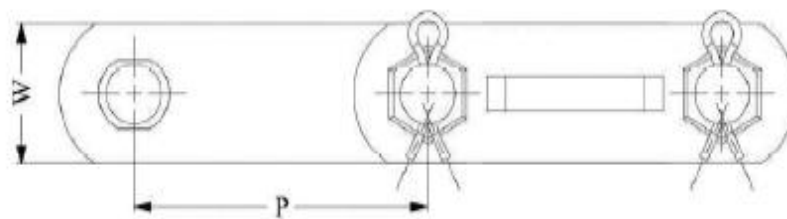
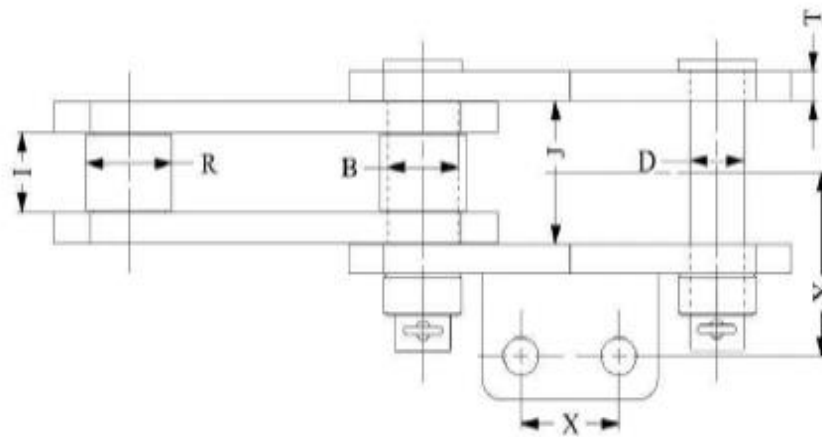


Chain No.	P	B	D	I	S	T	R	X	Y	Tensile Strength (Tons)
RUN 301	101.6	22	16	20	38	15	20	50	90	10
RUN 302	101.6	23	18	25	55	20	20	50	90	15
RUN 303	150	34	28	32	61	20	30	50	100	45
RUN 304	200	32	26	28	55	19	32	60	80	40
RUN 305	229	40	32	33	71	28	35	70	110	60
RUN 306	229	40	32	34	76	28	40	70	120	70
RUN 307	229	42	34	40	86	30	40	50	145	80
RUN 308	229	44	35	40	90	32	42.5	70	150	100
RUN 309	300	44	36	40	86	32	42.5	100	108	80
RUN 310	300	44	36	44	95	32	45	112	120	90
RUN 311	300	57	45	50	112	35	50	125	125	100
RUN 312	300	52	45	50	122	38	50	70	100	120
RUN 313	300	55	45	51	130	40	50	112	108	130
RUN 314	300	55	45	51	130	40	50	112	108	130

All dimensions are in mm

Alternative sizes available on enquiry

Rake Carrier Chain

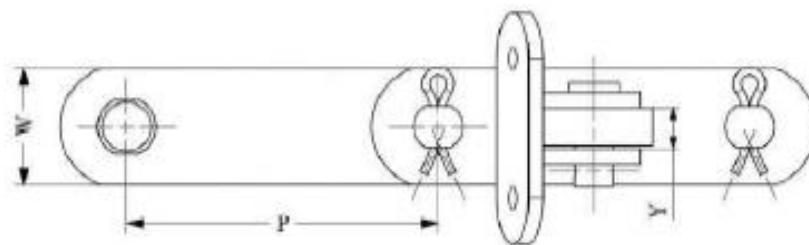
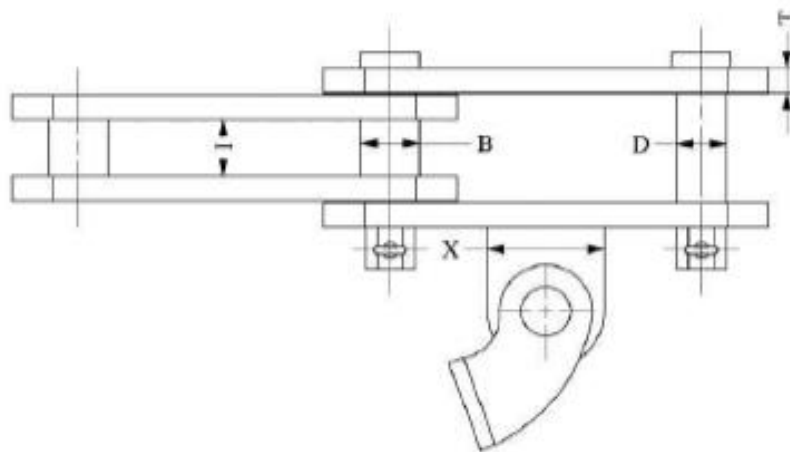


Chain No.	P	B	D	I	J	T	W	X	Y	Tensile Strength (Tons)
RUN 401	150	33	25	37	62	12	65	50	85	40
RUN 402	150	36	28	37	66	14	65	50	85	60

All dimensions are in mm

Alternative sizes available on enquiry

Bagasse Carrier Chain

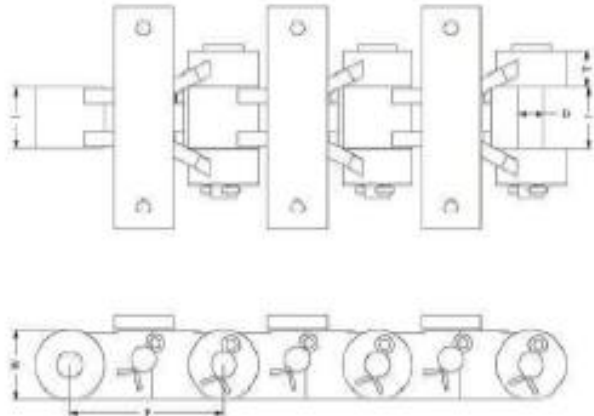
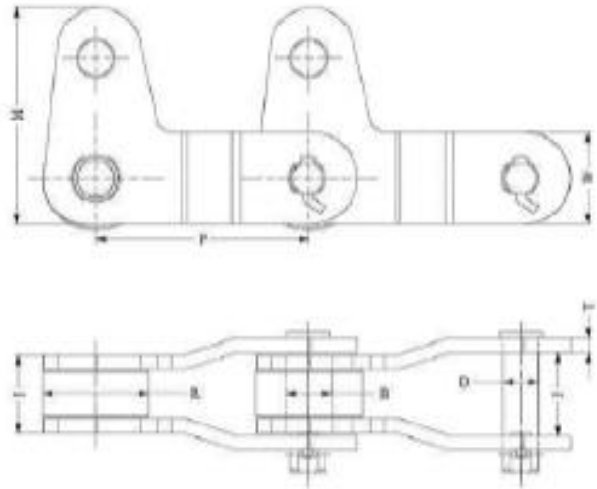


Chain No.	P	B	D	l	R	T	W	X	Y	Tensile Strength (Tons)
RUN 501	150	27	20	32	60	8	30	50	10	20
RUN 502	150	30	23	37	75	10	65	50	12	30
RUN 503	150	33	25	37	75	12	65	65	16	40
RUN 504	150	35	28	37	75	12	65	65	20	50
RUN 505	150	36	28	37	75	14	65	65	25	60
RUN 506	150	38	30	37	90	16	75	65	25	80
RUN 507	200	36	28	37	90	12	75	65	20	60
RUN 508	200	38	30	37	90	14	75	80	25	75
RUN 509	200	40	32	37	90	16	75	80	25	80
RUN 510	200	40	32	37	90	16	75	80	25	100

All dimensions are in mm

Alternative sizes available on enquiry

Travelling Grate Chain

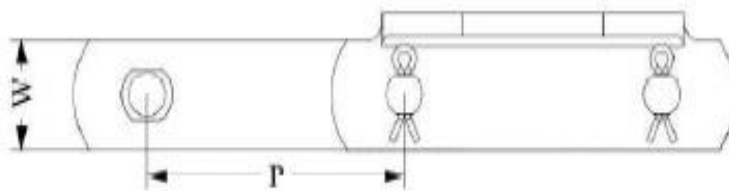
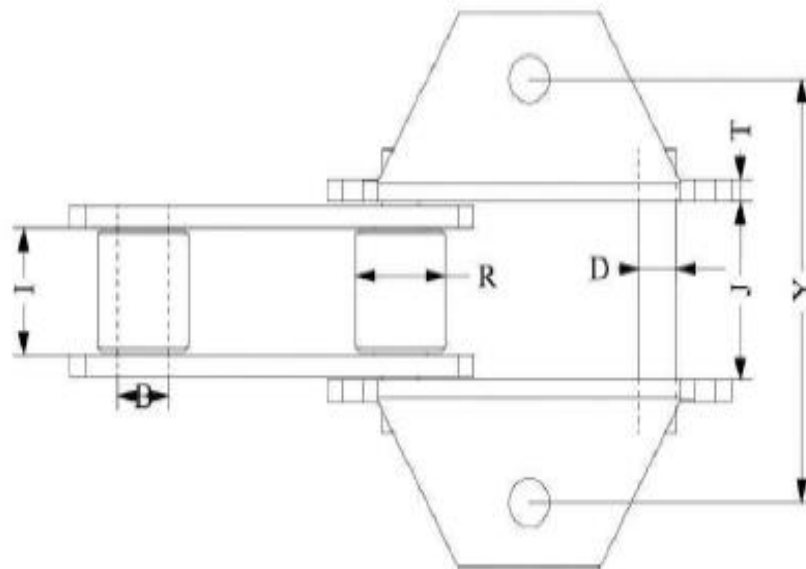


Chain No.	P	B	D	L	L	M	R	T	W	Tensile Strength (Tons)
RUN 601	146		26.65	65	67		57	16	65	40
RUN 602	150	33	25	56	58	140	75	10	65	40

All dimensions are in mm

Alternative sizes available on enquiry

Sugar Bag Stacker Chain

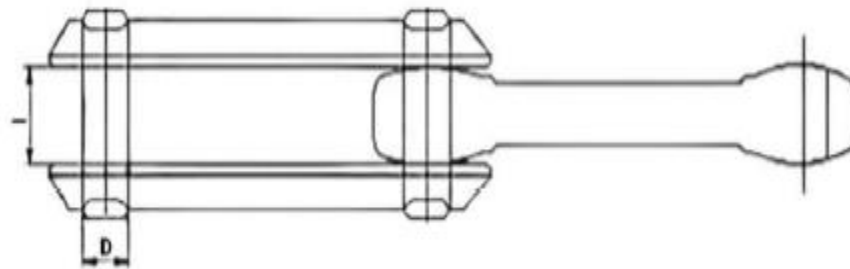
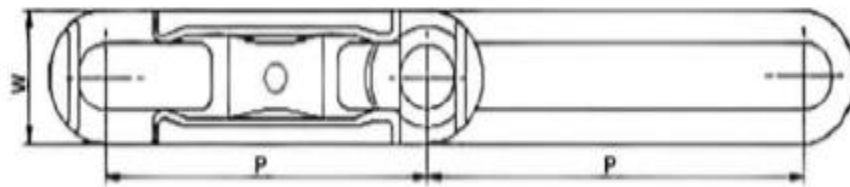


Chain No.	P	D	D	I	R	T	W	M	Y	Tensile Strength (Tons)
RUN 701	66.5	14	10	29	24	5	25	31	100	10
RUN 702	70	14	10	29	24	5	25	31	100	10
RUN 703	75	14	10	29	24	5	25	36	100	10
RUN 704	76.2	14	10	29	24	5	25	36	100	10

All dimensions are in mm

Alternative sizes available on enquiry

Drop Forged Chain

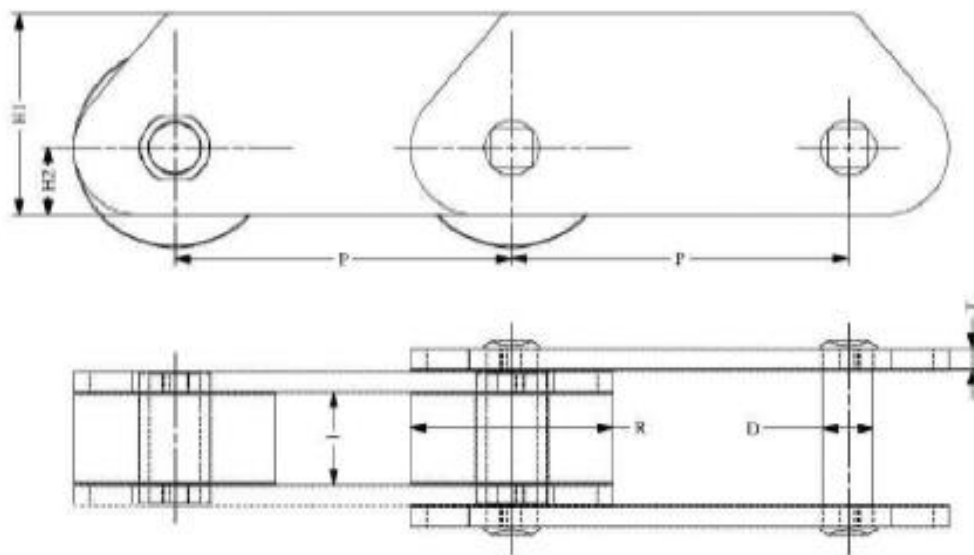


Chain No.	P	D	l	W	Tensile Strength (Tons)
RUN 801	76.2	12.7	19.05	26.92	24
RUN 802	102.38	15.87	25.65	34.92	48
RUN 803	153.18	22.22	32.76	50.8	85
RUN 804	153.18	28.44	39.37	68.32	136

All dimensions are in mm

Alternative sizes available on enquiry

Deep Link Chain

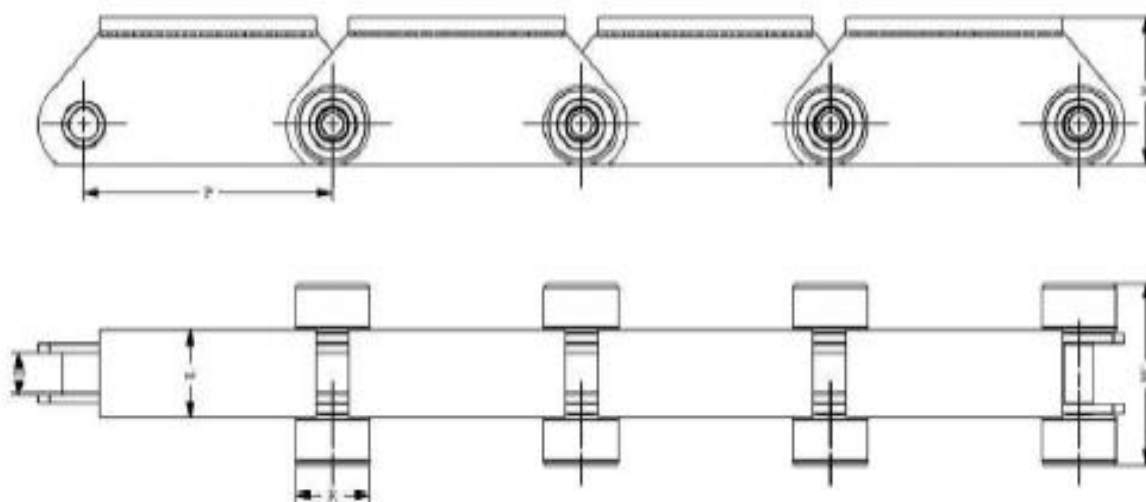


Chain No.	P	D	H1	H2	R	I	T	Tensile Strength (Tons)
RUN 005	80	10	45	30	42	24	4	5
RUN 008	100	12	50	32.5	50	28	5	8
RUN 011	125	15	60	40	60	32	6	11
RUN 016	160	18	70	45	70	37	7	16
RUN 022	200	21	90	60	85	43	8	22
RUN 031	250	25	100	65	100	48	10	31
RUN 045	315	30	120	80	120	56	12	45
RUN 062	400	36	140	90	140	66	14	62
RUN 090	500	44	180	120	170	78	16	90

All dimensions are in mm

Alternative sizes available on enquiry

Forward & Reverse Chains for Cold Bed

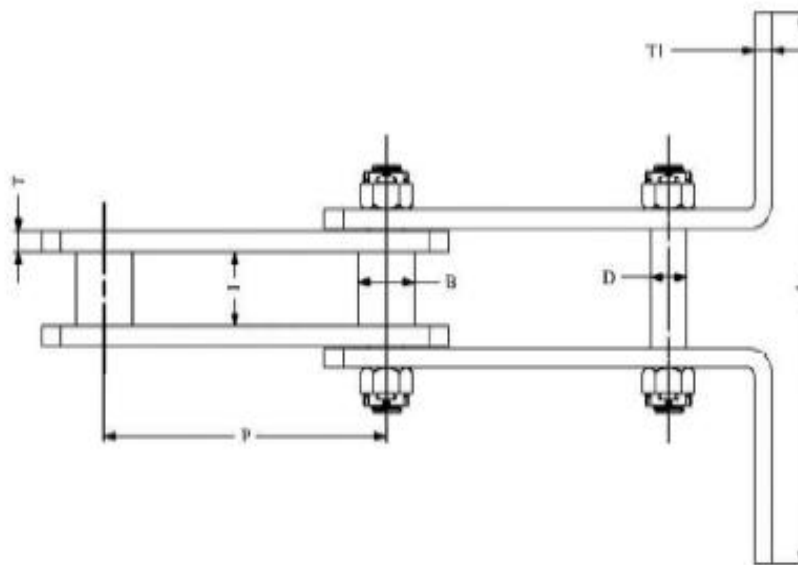


Chain No.	P	R	D	T	W	I	Tensile Strength (Tons)
RUN 135	135	50	19.75	10	120	50	32
RUN 150	150	36	15.5	8	95	37	20
RUN 175	175	56	19	10	120	44	40
RUN 220	220	36	15.85	8	85	37	22
RUN 240	240	70	15.2	6	175	66	15
RUN 245	245	50	15.5	8	96	38	22
RUN 270	270	36	15.5	8	80	38	22
RUN 300	300	50	16	10	180	48	27

All dimensions are in mm

Alternative sizes available on enquiry

Relder/Flight Conveyor Chain

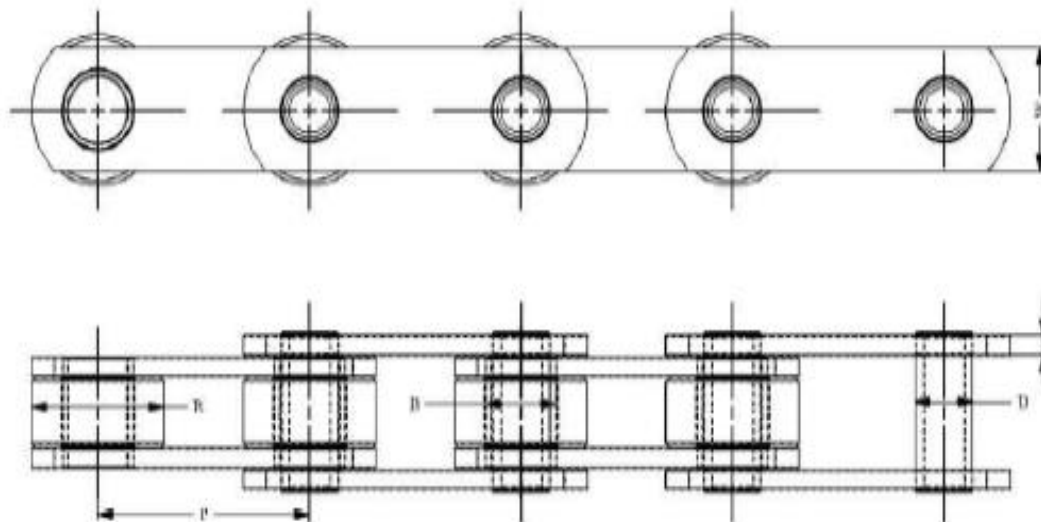


Chain No.	P	B	D	T	T1	A	I
RUN F-220	125	25	15.75	8	6	220	30
RUN F-250	125	25	15.75	8	6	250	30
RUN F-285	125	25	15.75	8	6	285	30
RUN F-385	125	25	15.75	8	6	385	30
RUN F-485	125	25	15.75	8	6	485	32
RUN F-585	125	31.75	19.05	8	6	585	32

All dimensions are in mm

Alternative sizes available on enquiry

Hollow Pin Chain

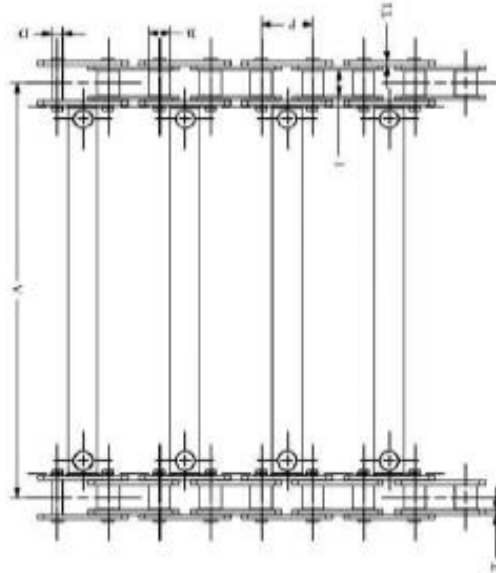


Chain No.	P	B	D	T	R	I	Tensile Strength (Tons)
RUN 010	50.8	15	9.7	4	31.75	15.2	4
RUN 020	63.5	15	9.7	4	31.75	15.2	4
RUN 030	76.2	15	9.7	4	31.75	15.2	4
RUN 040	95.25	17.5	10.3	4	31.75	16	4
RUN 050	101.6	15	9.7	4	31.75	15.2	4
RUN 060	125	20.5	13.25	5	47.62	19.5	12
RUN 070	127	21.75	9.7	4	31.75	15.2	4
RUN 080	152.4	15	15	4	31.75	15.2	4
RUN 090	254	26.5	19	6	66.67	25.4	20

All dimensions are in mm

Alternative sizes available on enquiry

Paver Chain



Chain No.	P	B	D	T	T1	A	I
RUN PVR-01	80	32	15.75	7.5	7.5	540	31
RUN PVR-02	80	32	15.75	7.5	7.5	480	31
RUN PVR-03	80	32	15.75	7.5	7.5	500	31
RUN PVR-04	80	28	15.75	7.5	6	560	34
RUN PVR-05	80	28	15.75	7.5	6	510	34
RUN PVR-06	70	30	15	5	6	540	34
RUN PVR-07	80	36	18	8	6	505	35.5
RUN PVR-08	84	24	15.7	8	8	470	26
RUN PVR-09	80	20	14	5	5	480	26

All dimensions are in mm

Alternative sizes available on enquiry

Transmission & Other Chains



SIMPLEX CHAIN



TRIPLEX CHAIN



DRIVE CHAIN



DUPLEX CHAIN



FLOW CONVEYOR CHAIN

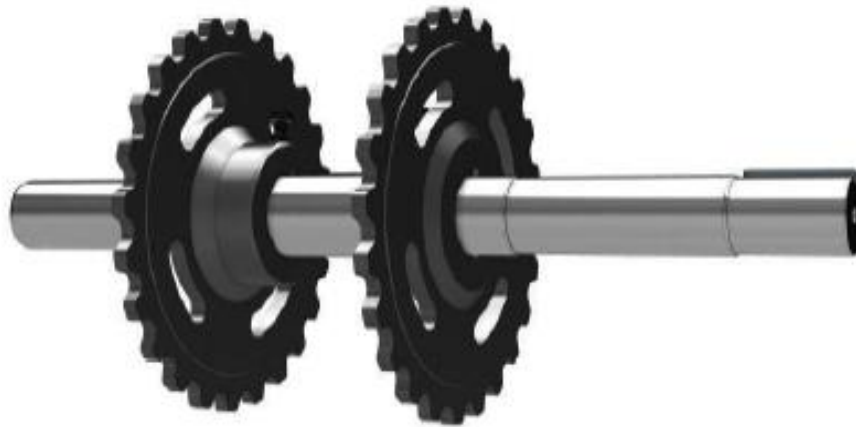
Spares



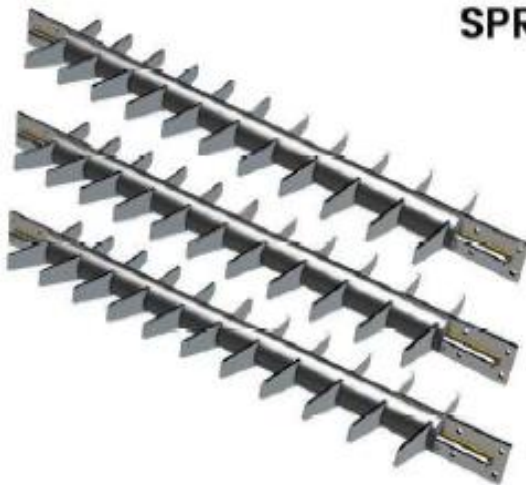
CHAIN SPARES



SLATS



SPROCKET



RAKES



IDLER ROLLER

Other Chain Accessories



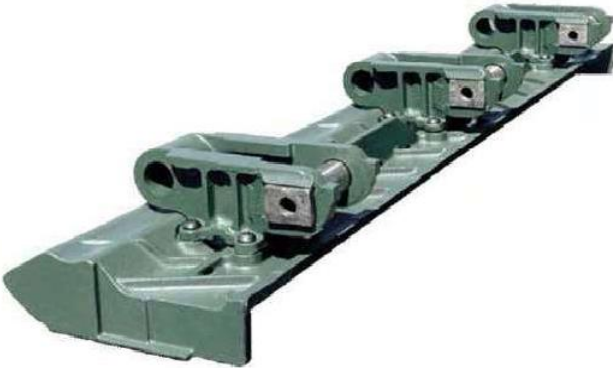
DPC ROLLER



RECLAIMER CHAIN



FORGED / DRAG CHAIN

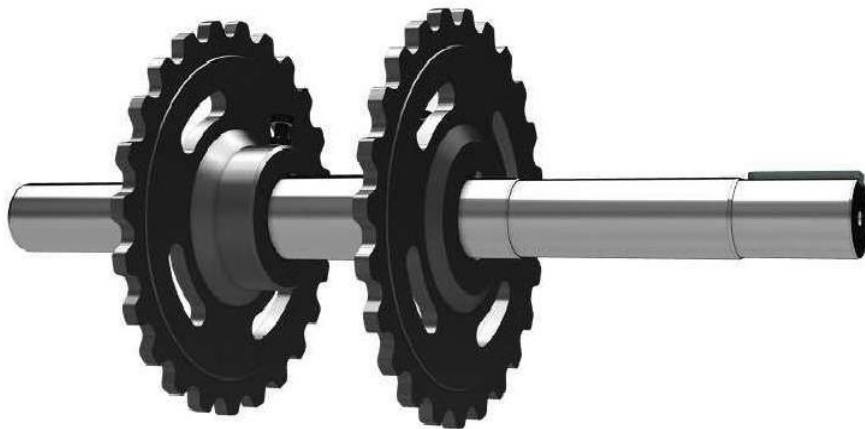


APRON FEEDER CHAIN

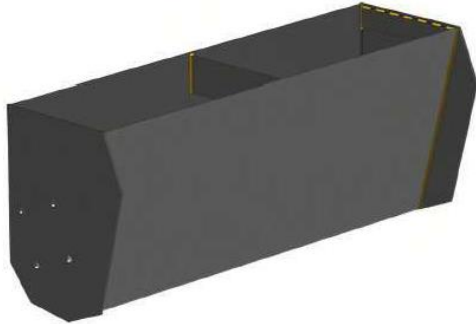


FLOW CONVEYOR CHAIN

Sprockets for Conveyor Chains



Other Chains & Accessories



ELEVATOR BUCKET



BUCKET



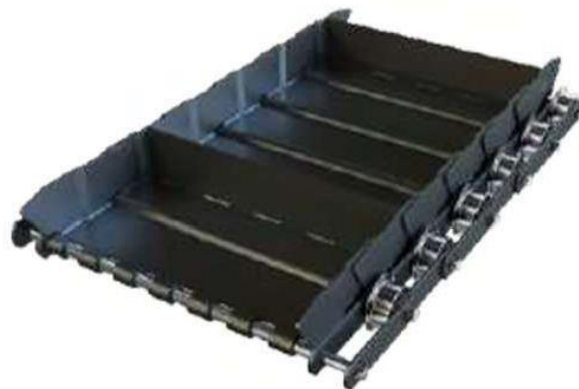
ROUND LINK CHAIN



ROUND LINK CHAIN



IDLER ROLLER



APRON / PAN CHAIN